



SECURITY DOORS
RESIDENTIAL ARMORED DOORS



CATALOGUE **SECURITY DOORS**

2022

SecurityDoors.store



SECURITY DOORS
RESIDENTIAL ARMORED DOORS

Our company focuses on the physical security of your home, providing you and your family with the best armored residential doors.

All our security doors are reinforced with an internal steel structure accompanied by a layer of wood, rock-wool strips and an integrated mechanism with many safety bolts for your security

FEATURES



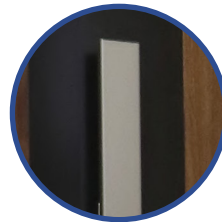
Security Bolts



Main Lock



Panoramic Peephole



Chrome Steel Handle



High Resistance Steel Frame

CONTACT

Phone: 469.514.9507

Email: franklin@securitydoors.store

Website: SecurityDoors.store

ARMORED DOOR



Steel Structure



Rockwool



Security Bolts

Door with a reinforced internal steel structure accompanied by a layer of wood, rockwool strips and an integrated mechanism with safety bolts.

MODEL BOSTON

■ **SIZE:** 33 7/8" x 78 3/4"

■ **SECURITY BOLTS:** 15 BOLTS

■ **THICKNESS TOTAL:** 4 3/8"

■ **THICKNESS DOOR:** 3 1/8"

■ **COLOR AND FINISH:** REAL RUSTIC WOOD



Security Bolts



Main Lock



Steel Frame



High Performance Finishing



Panoramic Peephole



Vertical Steel Handle

MODEL OX MARSELLA

- **SIZE:** 46" x 78 3/4"
- **SECURITY BOLTS:** 21 BOLTS
- **THICKNESS TOTAL:** 5 1/8"

- **THICKNESS DOOR:** 2 3/4"
- **COLOR AND FINISH:** WOOD
LAMINATED ROBLE DARK



Security Bolts



Main Lock



Steel Frame



High Performance Finish



Panoramic Peephole



Vertical Steel Handle

MODEL PHILADELPHIA

- **SIZE:** 33 7/8" x 78 3/4"
- **SECURITY BOLTS:** 15 BOLTS
- **THICKNESS TOTAL:** 4 3/8"

- **THICKNESS DOOR:** 3 1/8"
- **COLOR AND FINISH:** ALUMINUM WITH WOOD GRAY



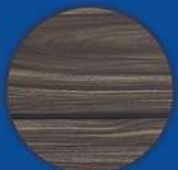
Security Bolts



Main Lock



Steel Frame



High Performance Finishing



Panoramic Peephole



Vertical Steel Handle

MODEL ONTARIO

■ **SIZE:** 34 1/4" x 78 3/4"

■ **SECURITY BOLTS:** 16 BOLTS

■ **THICKNESS TOTAL:** 5 1/8"

■ **THICKNESS DOOR:** 2 3/4"

■ **COLOR AND FINISH:** WOOD
LAMINATED CAOBA



Security Bolts



Main Lock



Steel Frame



High Performance Finishing



Panoramic Peephole



Vertical Steel Handle

MODEL OX ONTARIO

- **SIZE:** 46" x 78 3/4"
- **SECURITY BOLTS:** 21 BOLTS
- **THICKNESS TOTAL:** 5 1/8"

- **THICKNESS DOOR:** 2 3/4"
- **COLOR AND FINISH:** WOOD
LAMINATED CAOBA



Security Bolts



Main Lock



Steel Frame



High Performance Finishing



Panoramic Peephole



Vertical Steel Handle

MODEL MALLORCA

■ **SIZE:** 34 1/4" x 78 3/4"

■ **SECURITY BOLTS:** 16 BOLTS

■ **THICKNESS TOTAL:** 5 1/8"

■ **THICKNESS DOOR:** 2 3/4"

■ **COLOR AND FINISH:** WOOD
LAMINATED CEREZO



Security Bolts



Main Lock



Steel Frame



High Performance Finishing



Panoramic Peephole



Vertical Steel Handle

MODEL OX MALLORCA

- **SIZE:** 46" x 78 3/4"
- **SECURITY BOLTS:** 21 BOLTS
- **THICKNESS TOTAL:** 5 1/8"

- **THICKNESS DOOR:** 2 3/4"
- **COLOR AND FINISH:** WOOD
LAMINATED CEREZO



Security Bolts



Main Lock



Steel Frame



High Performance Finishing



Panoramic Peephole



Vertical Steel Handle

MODEL MALAGA

■ **SIZE:** 34 1/4" x 78 3/4"

■ **SECURITY BOLTS:** 16 BOLTS

■ **THICKNESS TOTAL:** 5 1/8"

■ **THICKNESS DOOR:** 2 3/4"

■ **COLOR AND FINISH:** WOOD
LAMINATED CEREZO



Security Bolts



Main Lock



Steel Frame



High Performance Finishing



Panoramic Peephole



Vertical Steel Handle

MODEL OX MALAGA

- **SIZE:** 46" x 78 3/4"
- **SECURITY BOLTS:** 21 BOLTS
- **THICKNESS TOTAL:** 5 1/8"

- **THICKNESS DOOR:** 2 3/4"
- **COLOR AND FINISH:** WOOD
LAMINATED CEREZO



Security Bolts



Main Lock



Steel Frame



High Performance Finishing



Panoramic Peephole



Vertical Steel Handle

BULLETPROOF DOOR



Steel Structure



Rockwool



Security Bolts

Door with a strong structure and a reinforced layer of steel that gives it the bullet resistant strength accompanied by a layer of wood, strips of rockwool and an integrated mechanism with safety bolts.

MODEL MAGNUM

- **SIZE:** 34 1/4" x 78 3/4"
- **SECURITY BOLTS:** 16 BOLTS
- **THICKNESS TOTAL:** 5 1/8"

- **THICKNESS DOOR:** 2 3/4"
- **COLOR AND FINISH:** WOOD
LAMINATED GRAY



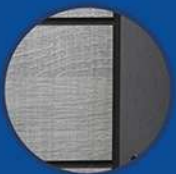
Security Bolts



Main Lock



Steel Frame



High Performance Finishing



Bulletproof 9mm



Vertical Steel Handle

MODEL POTENTUM

- **SIZE:** 34 1/4" x 78 3/4"
- **SECURITY BOLTS:** 16 BOLTS
- **THICKNESS TOTAL:** 5 1/8"

- **THICKNESS DOOR:** 3 1/2"
- **COLOR AND FINISH:** WOOD
LAMINATED ENCINO WHITE



Security Bolts



Main Lock



Steel Frame



High Performance Finishing



Bulletproof 44mm



Vertical Steel Handle

MODEL TORONTO

- **SIZE:** 34 1/4" x 78 3/4"
- **SECURITY BOLTS:** 16 BOLTS
- **THICKNESS TOTAL:** 5 1/8"

- **THICKNESS DOOR:** 2 3/4"
- **COLOR AND FINISH:** WOOD
LAMINATED GRAY OXFORD



Security Bolts



Main Lock



Steel Frame



High Performance Finishing



Bulletproof 9mm



Vertical Steel Handle

LUXURY DOOR



Moisture
Resistant



Heat
Resistant

COLORS AVAILABLE



CEDAR



TEAK



RED
WOOD



LIGHT
OAK



MAPLE



NOGAL



WALNUT



GRAY



SILVER
GREY



BLACK

Door with steel structure and layer accompanied by a reinforced plate of deck strips of different colors and an integrated mechanism with safety bolts.

MODEL COLUMBIA

- **SIZE:** 36" x 80"
- **THICKNESS DOOR:** 3 1/8"
- **SECURITY BOLTS:** 4 BOLTS
- **COLOR AND FINISH:** CEDAR
DECK COMPOSITE FINISHING
- **THICKNESS TOTAL:** 5 1/8"



Main Lock

Steel Frame

High Performance Finishing

Vertical Steel Handle

MODEL CALGARY

- **SIZE:** 50" x 80"
- **SECURITY BOLTS:** 4 BOLTS
- **THICKNESS TOTAL:** 5 1/8"

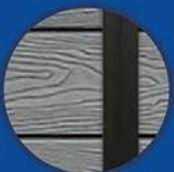
- **THICKNESS DOOR:** 3 1/8"
- **COLOR AND FINISH:** GRAY DECK COMPOSITE FINISHING



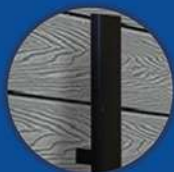
Main Lock



Steel Frame



High Performance Finishing



Vertical Steel Handle

MODEL TERRANOVA

- SIZE: 64" x 80"
- SECURITY BOLTS: 4 BOLTS
- THICKNESS TOTAL: 5 1/8"

- THICKNESS DOOR: 3 1/8"
- COLOR AND FINISH: LIGHT OAK DECK COMPOSITE F.



Main Lock



Tempered Glass



High Performance Finishing



Vertical Steel Handle

